



**NIGMT**  
**FOUNDATION**



**NETRA INSTITUTE OF GEOINFORMATICS**  
**MANAGEMENT AND TECHNOLOGIES FOUNDATION**  
[www.nigmt.org](http://www.nigmt.org) [info@nigmt.org](mailto:info@nigmt.org) +91-8585991286, 8800640777



# **NIGMT** NETRA INSTITUTE OF GEOINFORMATICS MANAGEMENT AND TECHNOLOGIES FOUNDATION

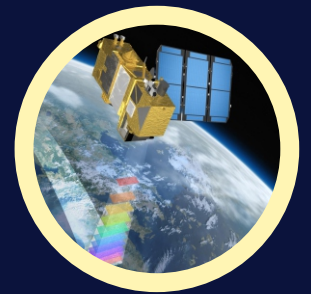
is a Non profit organization that is dedicated and committed to giving the technical and industrial training to students and professionals from diversified fields.



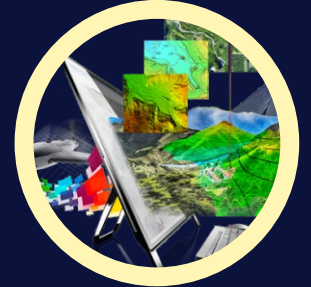
**GIS is the platform for creating the vision of 'New India'**

Our mission is to aid the country's vision and thereby provide with the best of the techno-industrial training in the geospatial domain.

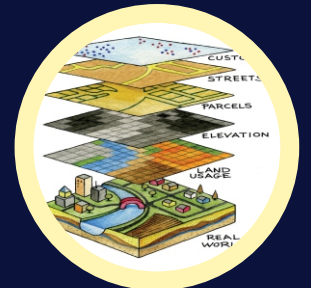
**WE OFFER OPPORTUNITIES FOR CANDIDATES IN THE FOLLOWING FIELDS:**  
Geography, Geology, Environmental Science, Disaster Management,  
Archaeology, Planning and Architecture, Engineers, Bsc, MSc,  
Management Studies- MBA, Surveying



**Remote Sensing**



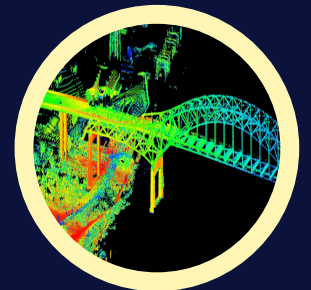
**Photogrammetry**



**GIS/ Web GIS**



**GPS/ Survey**



**LiDAR**



**UAV/Drone**

## COURSES WE OFFERED

- One Year PG Professional Program in Geoinformatics.
- One Year PG Diploma in Geoinformatics - University Program.
- Six Months Professional Program in GIS & Remote Sensing.
- Six Months Diploma in GIS & Remote Sensing - University Program.
- Three Months Professional Program in GIS.
- Three Months Professional Program in LiDAR.
- Three Months Professional Program in Photogrammetry.
- Three Months Professional Program in Remote Sensing.
- Three Months Certificate Course in GIS/RS/Photogrammetry/LiDAR - University Program.
- One Month Customize Professional Program in GIS/RS/LiDAR.
- Four Weeks Professional Program in UAV/drone.
- Two Weeks Professional Program in UAV/drone.
- Placements/Live Project Training/Internships in Reputed Organisations.

## ELIGIBILITY CRITERIA

Graduate in Geography, Geology, Disaster Management, Environmental, IT, Computer Science, Agriculture, Civil, Planning & Architectural, Graduates in Engineering & Final year students awaiting results may also apply.

### NOTE:

Written Ability/Interview/Technical test is required for PG Diploma and PG Professional Program. Entrance test need to be clear for the admissions.

## WHY CHOOSE THESE COURSES?

- Learn about the True Business Value of Integrated Geospatial Solutions
- Need to Communicate the VALUE of Geospatial and don't know where to start? if so join us to understand YOUR as is and To Be roadmap for Geospatial and Geomatics development.
- Define your workflows and processes to enable a whole life Information Management.
- (IM) approach to Geospatial and Geoinformatics Information.
- Learn how to align YOUR VISION with the real needs of your organization.
- Kick start your Digital Transformation Journey with us.

## REGISTRATION PROCESS

Interested Participant can register through

<http://www.nigmt.org>

Or mail [info@nigmt.org](mailto:info@nigmt.org)

Or call +91- 8585991286/8800640777

## NETRA ALSO OFFERS UNIVERSITY PROGRAMS IN ASSOCIATION WITH IASE DEEMED TO BE UNIVERSITY CHURU RAJASTHAN



- Post Graduate Diploma in Geo-informatics.
- Six Months Diploma in GIS & Remote Sensing.
- Three Months Certificate Course in GIS/RS/Photogrammetry/LiDAR.

Hostel Facilities also available  
100% Job Support

## NETRA ALSO OFFERS MANAGEMENT PROGRAMS IN ASSOCIATION WITH IIEST FEDERATION



### BANKING & FINANCE SECTOR

- Account Executive
- Finance Executive
- Mutual Fund Executive

### INFORMATION & TECHNOLOGY SECTOR

- Web Developer
- Graphic Designer
- Domestic Data Entry Executive
- CRM Voice Executive

### OFFICE ADMINISTRATION

- HR Executive
- Front Desk Executive

### TOURISM & HOSPITALITY SECTOR

- Food Safety Advisor

## CERTIFICATION VALIDATING AGENCIES



# GIS : ONE TECHNOLOGY , SEVERAL APPLICATIONS.....



## STUDENTS SPEAK



I am glad to get the exposure to the geospatial technologies with the help of NETRA Foundation. The six months Professional Diploma program has curriculum, assessments and exam patterns which have helped me to enhance my skill sets to start my professional career in Geospatial industry

**Apurwa Tiwari**  
MSc. , Jamia Millia Islamia University



I would give a 5-star rating to Global Educational Consultants and will encourage all my friends and those who are reading this review to approach NETRA if you have plans to study geoinformatics. I had a great experience with NETRA. The positive energy I acquired from RNT Sir is inexplicable.

**Kashika Kohli**  
M Plan.



The course is designed in such a way that it helps you apply the theoretical knowledge in your job role. The provided study material has the relevant examples that help you to understand the concepts clearly. I chose a subject that is relevant to my profile and after completion I could see the changes in my approach towards my working style.

**Piyush Sharma**  
B. Arch, Chandigarh University



I was worried about pursuing a certificate course in geoinformatics. But NETRA foundation staffs guided me very well and helped me to develop my confidence to opt for this field. During my course period, online help was always available. Personally I liked the Whatsapp Help centre. This course has given a boost to my career and currently I am a Digital Photogrammetry Technologist at Satpalda Pvt. Ltd., Ghaziabad, Ultra Pradesh

**Suraj Kumar**  
BA Program, University of Bihar

100 % JOB ASSISTANCE

## OUR RECRUITERS



DELHI CENTER : A105,1st Floor, Above Bank of India. Opp. Metro Pillar No.749. Mohan Garden, Near Dwarka Mor, New Delhi - 110059  
RAJASTHAN TRAINING CENTER : IASE Deemed University Campus, SardarShahar, Churu, Rajasthan -331403 ,  
www.nigmt.org - info@nigmt.org - Mpb. +91- 8585991286/8800640777